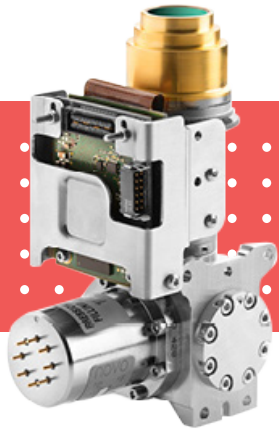


INFRARED DETECTOR



DAPHNIS-HD MW

1280 x 720 - 10 μm pitch - MCT

NEW: CO₂ NOTCH FILTER

Built on proven technology, the Daphnis-HD MW is smallest pixel pitch offer from LYNRED.

It provides simplified interface for an easy and quick integration into your system in 16:9 format.

LATEST LYNRED PRODUCT GENERATION FOR ALL APPLICATIONS REQUIRING 16:9 HD FORMAT



COMPACTNESS



LONGER RANGE



LARGER FOV (FIELD OF VIEW)



IMPROVED RELIABILITY

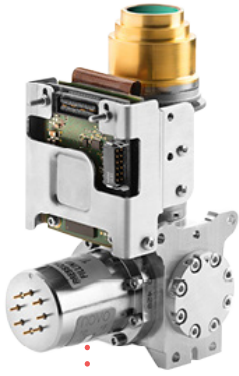
DEFENSE

SURVEILLANCE

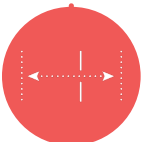


ORDERING REFERENCE: DAPHNIS-HD MW

DAPHNIS-HD MW



RELIABILITY



LONGER RANGE



HIGH RESOLUTION

●●LATEST LYNRED PRODUCT GENERATION FOR ALL APPLICATIONS REQUIRING 16:9 HD FORMAT ●●

ARRAY FEATURES

Detector spectral response	■ 3.7 μm - 4.8 μm
CO ₂ Notch Option	■ [3.4 μm - 4.2 μm + 4.5 μm - 4.8 μm]
FPA operating temperature	■ Up to 110 K

ROIC (READ-OUT INTEGRATED CIRCUIT)

ROIC architecture	■ Digital outputs / Direct Injection input circuit
ROIC functionalities	■ Programmable integration time, anti-blooming, invert/revert; binning, snapshot operation, (IWR or ITR), high dynamic range
Windowing modes	■ 320 x 4 minimum programmable
Charge handling capacity	■ 3 main gains: 1.1 Me-, 2.7 Me-, 5.6 Me-

INPUT / OUTPUT

Board Power supply	■ 6V _{DC}
Video output	■ 14 bits, cameralink®
Frame rate	■ Up to 85 Hz full frame rate

TYPICAL PERFORMANCES

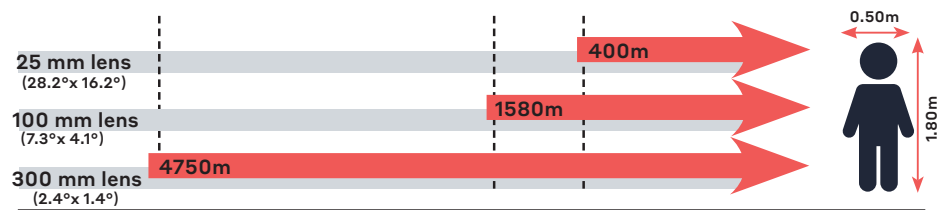
NETD	■ 20 mK (293K, 70% well fill, 2.7 Me-)		
Array operability	■ 99.8%		
	RM2	RM3	K508N
FOV (*)	f/2 to f/4	f/2 to f/4	f/2 to f/4
Cooler power supply	12 V	24 V	24 V
Cooler power @ 20°C (regulation/cooldown) (**)	4 W _{DC} / 12 W _{DC}	4W _{DC} / 13 W _{DC}	4 W _{DC} / 13 W _{DC}
Cooldown time @ 20°C	6 min	5 min	4 min 30 s
Cooler dimensions (mm)	Ø 30.5 x L 82	Ø 46 x L 71	Ø 46 x L 71
IDCA height (optical axis, mm)	H < 123.5	H < 144	H < 144
Weight	0.47 kg	0.64 kg	0.67 kg
Operating temperature	[- 40° C; 71° C]	[- 40° C; 71° C]	[- 40° C; 71° C]
MTTF for 24/7 typical surveillance profile in hot conditions	27.000 h	9.700 h	27.000 h

(*) Contact LYNRED for available configurations, (**) W_{DC} = at cooler C&CE DC input

OPTIONS

Technical training and support
Demokit for easy image processing in lab
CO ₂ notch filter available for improved performance contrast and +5% to +10% range increase

Recognition distances for human measuring 1.80 m x 0.50 m with Standard DAPHNIS



Range for Johnson's criteria, 50% probability, target deltaT = 2K, perfect atmospheric and optics transmissions, theoretical square pixel f/4 optics



LYNRED HEADQUARTERS
Avenue de la Vauve - CS 20018
91127 Palaiseau - France
Phone +33 (0)1 60 92 18 30
info@lynred.com

DEVELOPMENT AND PRODUCTION CENTER
Actipole - CS 10021 - 364, route de Valence
38113 Veurey-Voroize - France
Phone +33 (0)4 76 28 77 00
info@lynred.com