

# PICO640 Gen2

640 x 480 – 17  $\mu$ m

The thermal image sensor Pico640Gen2 is a versatile product. Built on proven technology, it limits development costs and shortens time to market.

## DESIGNED TO ANSWER ALL YOUR NEEDS



**ENHANCED IMAGE QUALITY**



**PROVEN RELIABILITY**



**SEAMLESS INTEGRATION**

DEFENSE



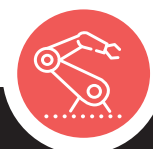
LEISURE



SURVEILLANCE



INDUSTRY



# DESIGNED TO ANSWER ALL YOUR NEEDS

## PICO 640Gen2

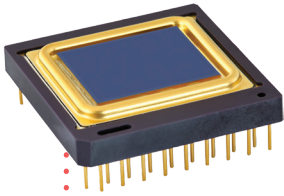


IMAGE QUALITY



RUGGEDIZED FOR HARSH ENVIRONMENT



RELIABLE



SEAMLESS INTEGRATION



LOW POWER CONSUMPTION

### ENHANCED IMAGE QUALITY

Sharp contrast	<ul style="list-style-type: none"> <li>■ Thermal sensitivity &lt; 50 mK (F/ 1, 300K, 30Hz)</li> <li>■ Thermal sensitivity &lt; 40 mK (F/ 1, 300K, 30Hz) (Pico640+)</li> <li>■ Extended operating temperature [-40°C; +85°C]</li> </ul>
Fluid and smooth image	<ul style="list-style-type: none"> <li>■ Frame rate up to 120Hz</li> <li>■ Thermal time constant &lt; 12 ms</li> </ul>
High uniformity	<ul style="list-style-type: none"> <li>■ Array operability &gt; 99.5 %</li> <li>■ Array operability ≥ 99.8 % (Pico640+)</li> </ul>

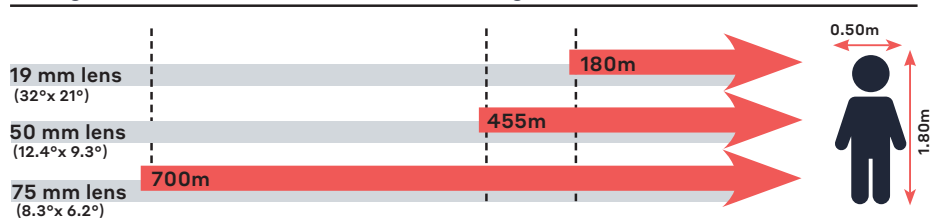
### PROVEN RELIABILITY

Standards MIL810 – MIL883	
Thermal Weapon Sight (TWS) qualified	
Product availability and exportability	■ Products designed and manufactured in Europe
Product delivery to our customers	■ On-time order deliveries > 95%
Guaranteed 10 years against vacuum loss	

### SEAMLESS INTEGRATION

Product platform	<ul style="list-style-type: none"> <li>■ Full access to sensor features (I<sup>2</sup>C)</li> <li>■ External frame synchronization capability</li> </ul>
Simplified image processing	<ul style="list-style-type: none"> <li>■ TECless, Shutterless compatible</li> <li>■ Single gain table and predictable offset management</li> </ul>
Battery optimization	■ Low power consumption < 130 mW

### Recognition distances for human measuring 1.80 m x 0.50 m



Range for Johnson's criteria, target deltaT = 2K, perfect atmospheric and optics transmissions, theoretical square pixel.



**LYNRED HEADQUARTERS**  
 Avenue de la Vauve - CS 20018  
 91127 Palaiseau - France  
 Phone +33 (0)1 60 92 18 30  
 info@lynred.com

**DEVELOPMENT AND PRODUCTION CENTER**  
 Actipole - CS 10021 - 364, route de Valence  
 38113 Veurey-Voroize - France  
 Phone +33 (0)4 76 28 77 00  
 info@lynred.com

Réf. 06/2020/01-Device a lab pictures-Printed in France  
 Technical characteristics described in this data sheet are for information only. They are not contractual and may change without prior notice.