

# PICO384 Gen2

384 x 288 – 17  $\mu$ m

The thermal image sensor Pico384Gen2 is specially designed for mass thermal detection markets. Built on proven technology, it limits development costs and shortening time to market.

## A FULL DIGITAL SURFACE MOUNT DEVICE FOR HIGH VOLUME INTEGRATION



INCREDIBLE IMAGE QUALITY



SEAMLESS INTEGRATION



OPTIMIZED TOTAL COST OF OWNERSHIP

LEISURE



SURVEILLANCE

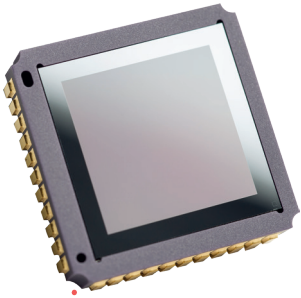


INDUSTRY



# ●● FULL DIGITAL SURFACE MOUNT DEVICE FOR HIGH VOLUME INTEGRATION ●●

## PICO 384Gen2



### INCREDIBLE IMAGE QUALITY

Sharp contrast	<ul style="list-style-type: none"> <li>■ Thermal sensitivity &lt; 60 mK, (f/1, 300K, 50Hz)</li> <li>■ [-40°C; +85°C] operating temperature range</li> </ul>
Fluid and smooth image	<ul style="list-style-type: none"> <li>■ Frame rate up to 60Hz</li> <li>■ Thermal time constant &lt; 10 ms</li> </ul>
High uniformity	<ul style="list-style-type: none"> <li>■ Array operability &gt; 99.8 %</li> </ul>

### SEAMLESS INTEGRATION

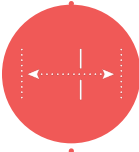
Simplified electronic design	<ul style="list-style-type: none"> <li>■ Full access to sensor features (I<sup>2</sup>C serial link)</li> <li>■ Free run or external trigger mode</li> <li>■ Full digital component</li> </ul>
High volume compliant	<ul style="list-style-type: none"> <li>■ Surface Mount Device (J-Lead44)</li> <li>■ JEDEC's reflow and handling standards compatible</li> </ul>

### OPTIMIZED TOTAL COST OF OWNERSHIP

Simplified image processing	<ul style="list-style-type: none"> <li>■ Predictable behavior</li> <li>■ TECless, Shutterless compatible</li> </ul>
Battery optimization	<ul style="list-style-type: none"> <li>■ Low power consumption &lt; 220 mW - 60Hz</li> <li>■ Digital mode</li> </ul>
Proven reliability	<ul style="list-style-type: none"> <li>■ Standards MIL810 - MIL883</li> </ul>



COMPACT



LONG RANGE  
OBSERVATION

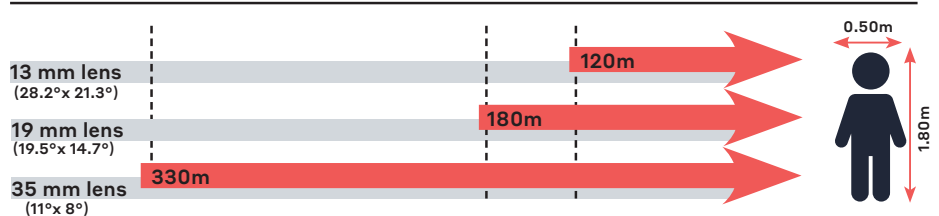


ROBUST



FULL DIGITAL

### Recognition distances for human measuring 1.80 m x 0.50 m



Range for Johnson's criteria, target deltaT = 2K, perfect atmospheric and optics transmissions, theoretical square pixel.



**LYNRED HEADQUARTERS**  
Avenue de la Vauve - CS 20018  
91127 Palaiseau - France  
Phone +33 (0)1 60 92 18 30  
info@lynred.com

**DEVELOPMENT AND PRODUCTION CENTER**  
Actipole - CS 10021 - 364, route de Valence  
38113 Veurey-Voroize - France  
Phone +33 (0)4 76 28 77 00  
info@lynred.com