

INFRARED DETECTOR

SNAKE SW TECLESS

640 x 512 – 15µm pitch - InGaAs

The Infrared detector designed for the most demanding SWIR applications such as surveillance, industrial and science applications.

LYNRED InGaAs technology provides leading edge performance in terms of sensitivity, noise, dark current and operability.

SEE BEYOND WHAT IS **VISIBLE**



EASY INTERPRETATION



VISIBLE LIKE



ENHANCE SORTER DETECTION CAPABILITY



DEFECTS DETECTION IN PROCESSING

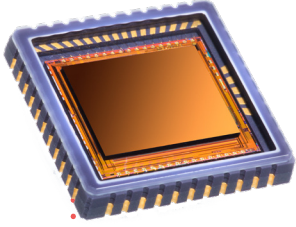
INDUSTRY

SURVEILLANCE



ORDERING REFERENCE: **SNAKE SW TECLESS**

SNAKE SW TECLESS



VERSATILE

LOW NOISE

COMPACT

EASY
INTERPRETATION
VISIBLE-LIKE

ARRAY FEATURES

Sensor type	■ InGaAs PIN-Photodiode
Spectral response	■ 0.9 μm x 1.7 μm

ROIC (READ-OUT INTEGRATED CIRCUIT)

Integration type	■ Snapshot / Global Shutter
Readout modes	■ IWR, ITR, NDR
Exposure time	■ 1 μs to full frame
Maximum full frame rate @ 9 MHz	■ 100 fps / 180 fps / 300 fps (2, 4 or 8 outputs)
Maximum frame rate @ 9 MHz	■ 30 KHz (windowing mode)
Maximum pixel rate	■ 18 MHz per output
Charge handling capacity	■ 43 10^3 e- (Gain 0) / 120 10^3 e- (Gain 1) / 1.44 10^6 e- (Gain 2)

TYPICAL PERFORMANCES

Quantum efficiency (QE)	■ 70% from 1 μm to 1.6 μm
Noise with ROIC	■ 30 e- (Gain 0)
Dark current	■ 30 fA @ 0.2 V detector bias
Array operability	■ 99.9% (*)
Non uniformity without correction	■ 4%

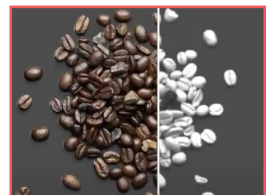
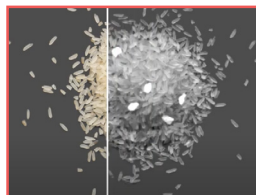
PACKAGING

	SNAKE SW	SNAKE SW TECLESS
Dimension (W x H x D)	■ 42 mm x 30 mm x 9 mm	16 mm x 16.5 mm x 2.8 mm
Windows	■ Sapphire	Borosilicate glass
Number of pins	■ 28 ■ Standard 1/10 inch pin pitch	44 Standard CLCC, 1.27 pin pitch
Cooler	■ Single stage TE Cooler	NA
Packaging characteristics	■ Hermetically sealed	NA
Operating and storage temperature	■ [- 40°C; +71°C]	[- 20°C; +60°C]

(*) The fraction of pixels with responsivity deviation less than +/- 30 % from the mean.

OPTIONS

Technical training and support
Proximity driving electronics (Including ADC)



LYNRED HEADQUARTERS
Avenue de la Vauve - CS 20018
91127 Palaiseau - France
Phone +33 (0)1 60 92 18 30
info@lynred.com

DEVELOPMENT AND PRODUCTION CENTER
Actipole - CS 10021 - 364, route de Valence
38113 Veurey-Voroize - France
Phone +33 (0)4 76 28 77 00
info@lynred.com