

INFRARED DETECTOR

ATTO160-02

160 x 120 – 12 μm

Based on continuous customers feedback, LYNRED has improved its 12 μm technology for the ATTO products family.

Offering fluid and crisp images with low power consumption, ATTO160-02 combines key values to meet the requirements of commercial applications.

HIGHER SENSITIVITY FOR LIMITLESS APPLICATIONS



FLUID AND CRISP IMAGES



SEAMLESS INTEGRATION



OPTIMIZED TOTAL COST OF OWNERSHIP

LEISURE



SURVEILLANCE



FIREFIGHTING



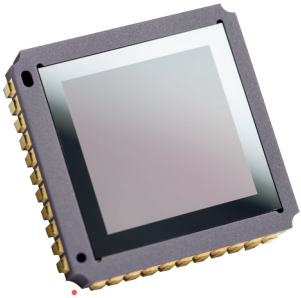
THERMOGRAPHY



ORDERING REFERENCE: ATTO160-02

HIGHER SENSITIVITY FOR LIMITLESS APPLICATIONS

ATTO160-02



FLUID AND CRISP IMAGES

Resolution	■ 160 x 120
Sharp contrast	■ Thermal sensitivity < 50 mK (f/1, 300K, 60Hz) ■ [-40°C; +85°C] operating temperature range
Fluid and smooth image	■ Frame rate up to 60Hz
High uniformity	■ Array operability > 99.8%

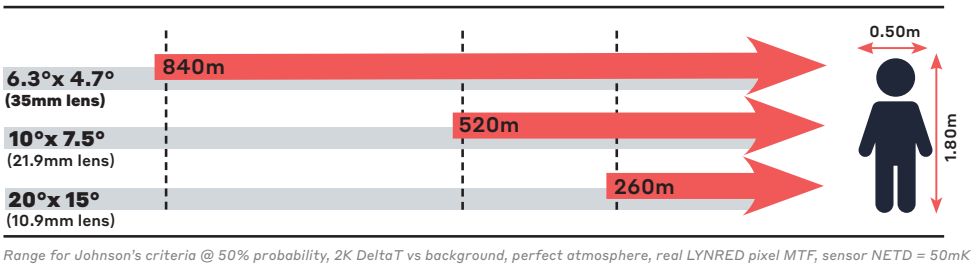
SEAMLESS INTEGRATION

Simplified electronic design	■ Full digital component
High volume compliant	■ Surface-mount Device (J-Lead44) ■ Compatible with JEDEC's reflow and handling standards
Flexible configuration	■ Full access to sensor features (I ² C) ■ Free-run or external trigger mode

OPTIMIZED TOTAL COST OF OWNERSHIP

Reduced optic size and cost	■ 12 μm pixel pitch
Simplified image processing	■ Predictable behavior ■ TECless, Shutterless compatible
Battery optimization	■ Low power consumption < 220 mW ■ Digital mode

Human recognition distance with f/1 optics (perfect OTF & 88% typical transmission)



COMPACT



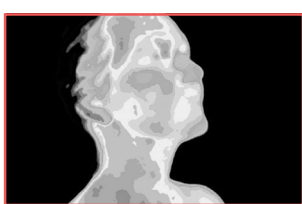
FULL DIGITAL



LOW POWER CONSUMPTION



SEAMLESS INTEGRATION



LYNRED HEADQUARTERS
Avenue de la Vauve - CS 20018
91127 Palaiseau - France
Phone +33 (0)1 60 92 18 30
info@lynred.com

DEVELOPMENT AND PRODUCTION CENTER
Actipole - CS 10021 - 364, route de Valence
38113 Veurey-Voroize - France
Phone +33 (0)4 76 28 77 00
info@lynred.com