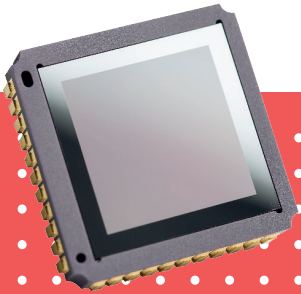




# PIC0384S

384 x 288 – 17 μm



The thermal image sensor PIC0384S has increased sensitivity to provide high image quality when scene dynamic is low.

This full digital surface mount device is built on proven technology, limits development costs and shortens time to market, helping manufacturers get simple-to-use and truly competitive end products to the market.

## SPECIALLY DESIGNED FOR ALL ENVIRONMENTS WITH LOW LIGHT CONTRAST



ENHANCED IMAGE QUALITY



SEAMLESS INTEGRATION



OPTIMIZED TOTAL COST OF OWNERSHIP

LEISURE



SURVEILLANCE



FIREFIGHTING



THERMOGRAPHY



●● SPECIALLY DESIGNED FOR ALL ENVIRONMENTS WITH LOW LIGHT CONTRAST ●●

PIC0384S

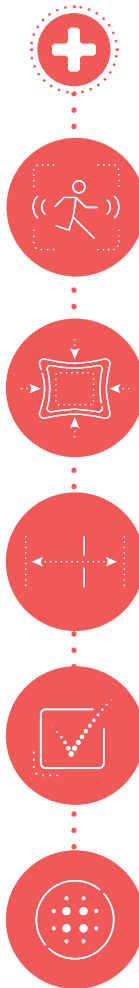
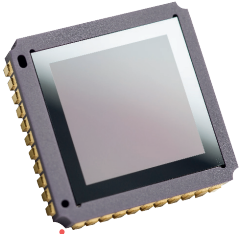


IMAGE QUALITY

COMPACT

LONG RANGE OBSERVATION

RELIABLE

FULL DIGITAL

**ENHANCED IMAGE QUALITY**

Resolution	■ 384 × 288
Sharp contrast	■ Thermal sensitivity < 30 mK, (f/1, 300K, 50Hz) ■ [-40°C; +85°C] operating temperature range
Fluid and smooth image	■ Frame rate up to 60Hz
High uniformity	■ Array operability > 99.8 %

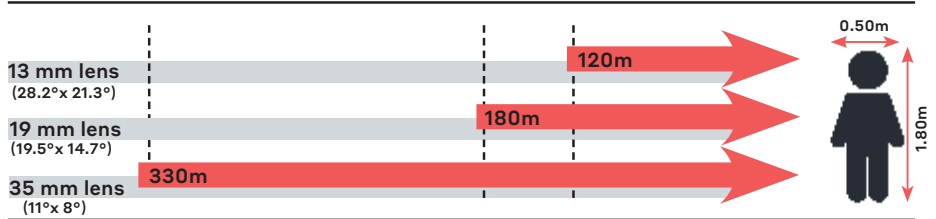
**SEAMLESS INTEGRATION**

Simplified electronic design	■ Full access to sensor features (I <sup>2</sup> C serial link) ■ Free-run or external trigger mode ■ Full digital component
High volume compliant	■ Surface-mount Device (J-Lead44) ■ Compatible with JEDEC's reflow and handling standards

**OPTIMIZED TOTAL COST OF OWNERSHIP**

Simplified image processing	■ Predictable behavior ■ TECless, Shutterless compatible
Battery optimization	■ Low power consumption < 220 mW ■ Digital mode
Proven reliability	■ Standards MIL810 - MIL883

**Recognition distances for human measuring 1.80 m x 0.50 m**



Range for Johnson's criteria, target deltaT = 2K, perfect atmospheric and optics transmissions, theoretical square pixel.



**LYNRED HEADQUARTERS**  
Avenue de la Vauve - CS 20018  
91127 Palaiseau - France  
Phone +33 (0)1 60 92 18 30  
info@lynred.com

**DEVELOPMENT AND PRODUCTION CENTER**  
Actipole - CS 10021 - 364, route de Valence  
38113 Veurey-Voroize - France  
Phone +33 (0)4 76 28 77 00  
info@lynred.com