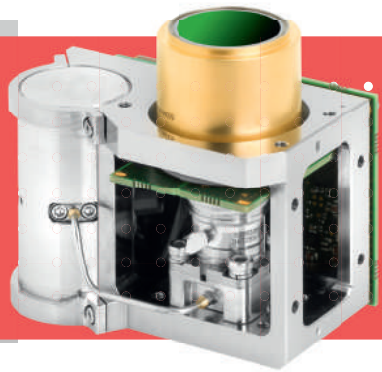


INFRARED DETECTORS



# EOLE™

640 x 512 - 15µm  
MWIR : 3.2 - 3.55µm

The EOLE™ product has been optimized for detecting Methane as well as other gases, including Methanol, Benzene and Ethanol. EOLE™ is suitable for portable and 24/7 applications.

The EOLE™ product is integrated into the new platform developed by LYNRED, which gives integrators the opportunity of creating a single design that can host different products to cover a range of multi-purpose applications.

## THE NEW **VGA SENSOR** FOR OPTICAL GAS IMAGING (OGI) APPLICATIONS

- HIGH SENSITIVITY**
- LOW POWER**
- EASY INTEGRATION**
- COMPACT & RELIABLE**



GAS DETECTION



# THE NEW VGA SENSOR FOR OGI APPLICATIONS



## MULTI-PURPOSE



## LOW POWER

For Hand Held applications



## COMPACT

for Easily embedded on drones



## HIGH SENSITIVITY

To be compliant with the new legislative rules



## RELIABILITY

For 24/7 applications



PRODUCT	
Spectral Band	■ 3.2µm to 3.55µm
Aperture (F/Number)	■ F/1.3
MTTF	■ 32 000 hrs (LP4 Lynred profile)
NETD	■ Typical 20mK / Max 25mK (300K of Black body temperature)
FPA operability	■ > 99.5%
Cooler	■ Split Linear cryocooler: Ricor K588
Cool down time	■ < 340sec @ 20°C and 12 Vdc power supply
FRAME RATE	
Minimum framerate	■ Typical 30Hz, from 15Hz to 60Hz
FPA FEATURES	
Well Capacity	■ 2.1 Me-(typical)
ROIC modes	■ Supports ITR and IWR integration modes
Windowing	■ ROI feature support, with 160 x 2 minimum size
Image flip	■ Horizontal and/or vertical image mirroring
INTERFACES	
Video output	■ CameraLink® Base Mode
Communication	■ CameraLink® UART
Embedded sensor	■ Focal Plan Array and Product temperatures
ON-BOARD PERIPHERALS	
Genlock Feature (external sync.)	■ Frame rate or integration signal / Pixel Clock
Built-in test	■ Video test pattern, Power supplies monitoring
Product power supply voltage range	■ 12 Vdc typical
Product Power Consumption	■ Cooldown : < 13 Wdc @ 25°C (TBC) ■ Steady state : < 3.2 Wdc (TBC) @ 25°C, 30 Hz
PHYSICAL CHARACTERISTICS	
Maximum Outline dimensions (LxWxH)	■ 56 mm * 77 mm * 72.5 mm
Weight	■ 365 g
ENVIRONMENTAL	
Operating temperature Range	■ [-40°C; +65°C]
Storage temperature Range	■ [-40°C; +71°C]

**LYNRED HEADQUARTERS**  
Avenue de la Vauve - CS 20018  
91127 Palaiseau - France  
Phone +33 (0)1 60 92 18 30  
info@lynred.com

**DEVELOPMENT AND PRODUCTION CENTER**  
Actipole - CS 10021 - 364, route de Valence  
38113 Veurey-Voroize - France  
Phone +33 (0)4 76 28 77 00  
info@lynred.com

**LYNRED ASIA PACIFIC PTE LTD**  
5 Shenton way,  
#22-04 UIC Building  
068808 Singapore  
info@lynred.com

**LYNRED USA**  
373 US Highway 46W  
Fairfield, NJ 07004, USA  
Phone +1 973.882.0211  
info@lynred-usa.com